

Faculty of Law, Economics
and Finance



Luxembourg Centre
for Logistics and Supply
Chain Management (LCL)



LCL – the year in review





EXPLORE
CONFERENCE



SUPPLY CHAIN DAY
18. April 2024



**CLUSTER
FOR
LOGISTICS**
LUXEMBOURG
ADDING VALUE IS THE KEY.



LUXEMBOURG CENTRE
FOR LOGISTICS AND SUPPLY
CHAIN MANAGEMENT (LCL)

**Supply Chain Legislation:
Is it a Game Changer or just another Box to tick?**

Industry Thesis Projects

FACULTY OF LAW, ECONOMICS AND FINANCE



Luxembourg Centre
 for Logistics and Supply
 Chain Management (LCL)
 Student: Abhijit Surandasha, LSCM 2022
 Student: Ankit Nain, LSCM 2022
 Advisor: Dr. Laurens Deprez
 Sponsor:

Integrated Sustainable Supply Chains



January 2022 Poster Session

Background / Motivation

Procurement Management

- Strategy
- Categories
- Suppliers

Maritime Linkage

- 64k Ships
- 90% Trade
- 2.2% GHG

Innovation Focus

- Process
- Technology
- Skills

Supplier Integration

- Trust
- Clarity
- Partner

ESG Goals

- People
- Planet
- Profits

Motivation:

- > Procurement's rising focus on Environmental, Social & Governance (ESG) goals
- > Maritime - a key partner for integration on ESG goals
- > Focus on innovation & supplier integration
- > Develop ESG framework
- > Predict potential impact

Key Questions

- > What is the potential impact of procurement on achieving ESG goals and how can it be measured?
- > With 90% global trade dominated by Maritime, how can it enhance ESG compliant sourcing?

Relevant Literature

- > Global regulatory policies on ESG & Maritime
- > Industry research reports, articles & reviews on trends and new developments in ESG, Procurement and Maritime

Integration with Maritime for Sustainable Sourcing

Project Plan

Feb	Literature review on ESG challenges in Procurement & Maritime
Mar	Identify & analyse ESG metrics for a chosen industry and firm(s)
Apr	Conduct interviews to validate metrics for chosen firm(s)
May	Develop & test a framework to evaluate impact on ESG goals
Jun	Write Project Thesis and Presentation for submission

Initial Results

Procurement Planning

- Supplier Code
- Supplier Origin
- Supplier Mix & Selection
- Inventory Policy
- Capacities & Infrastructure

Procurement Operations

- Contract Management
- Mode of Transportation
- Order Quantity, Mix, Frequency
- Lead Times & Delays
- Changing Demand

Factors Impacting CO₂ Emissions

Maritime Planning

- Routing & Scheduling
- Intermodal Network Design
- Fleet Deployment
- Tide Lagoon Concept
- Queueing Model for Ports

Maritime Operations

- Ship Size & Speed
- Port & Terminal Management
- Vessel Train Concept
- Blue Carbon Replenishment
- Optimal Use Model

Expected Contribution

- > Identifying metrics to design a framework for measuring impact of procurement on ESG goals
- > Highlighting benefits of integration with Maritime to build sustainable procurement
- > Predicting impact on ESG goals of a chosen company to illustrate the proof-of-concept

Abhijit Surandasha
 Ankit Nain

Current and past thesis partners:



Project intake for the cohort of 2024/25 is coming up!

Talk to us (representatives from the LCL) and consult with the Master Thesis Partnership Guidebook for further information.

MLSCM Class of 2024

FACULTY OF LAW, ECONOMICS AND FINANCE



Research Fest / Graduation Day:

26th June 2024
Hotel Parc Belair

15:00-16:30 Thesis presentations
16:30-18:00 Awarding of diplomas

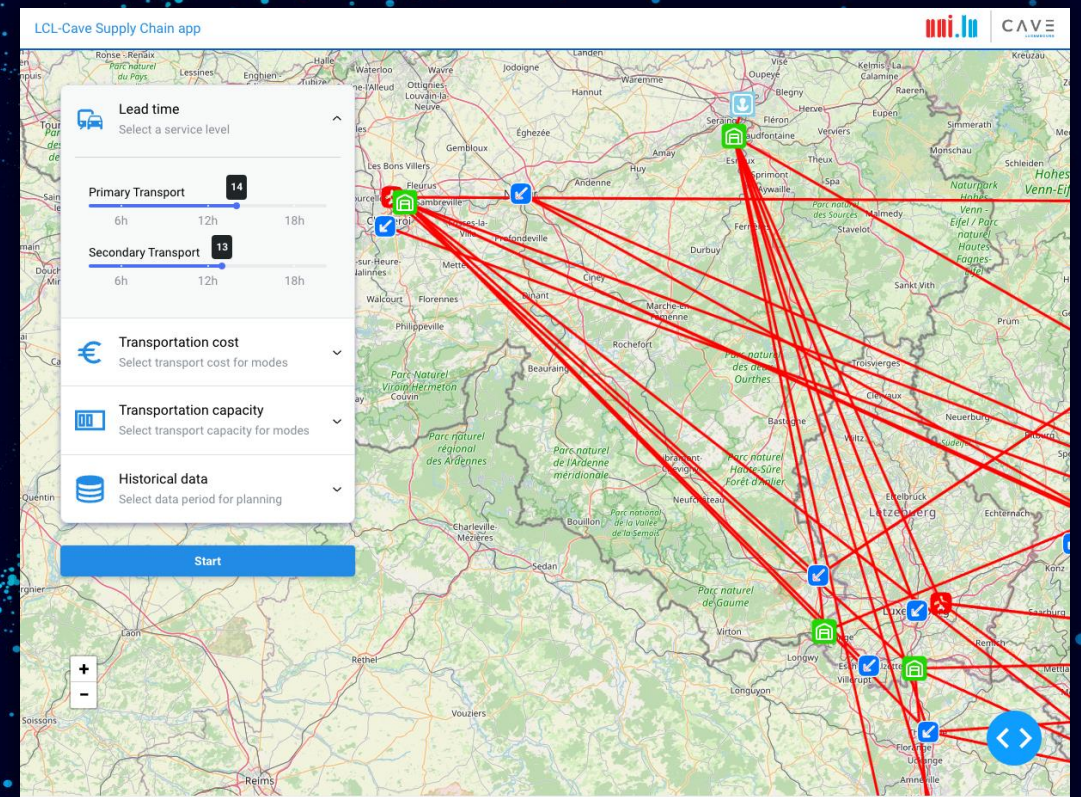
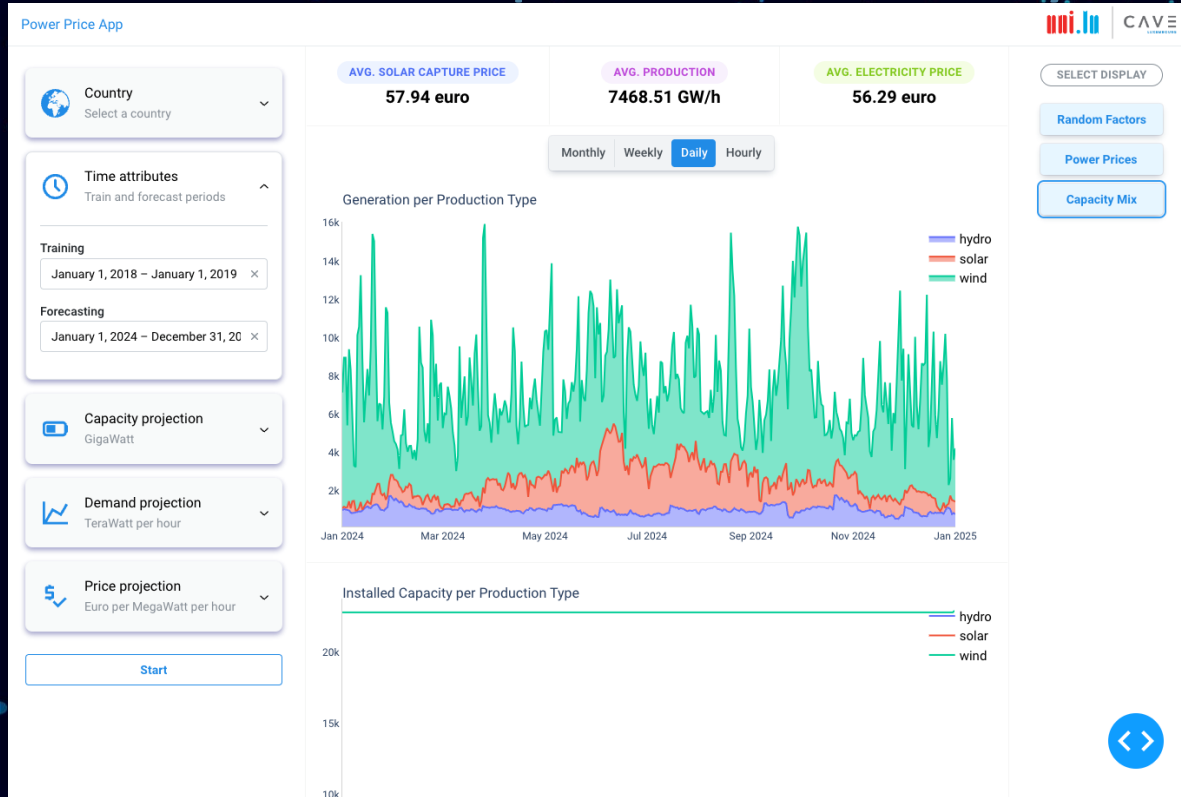
Graduate Profile:

Strong Analytical and Data Science skills for Logistics and Supply Chain Management;
Comprehensive training in management and leadership.



LCL CAVE Lab

Computational Analytics, Visualization & Education



LCL COMPUTATIONAL ANALYTICS,
VISUALIZATION & EDUCATION LAB
POWERED BY MIT

Visit us on cave.uni.lu!



Dr. Laura Vanessa Palacios-Arguello



MAERSK

DELANO

LUXEMBOURG IN ENGLISH

The last mile, a headache for transporters

Written by Jeremy Zabatta
Published on 25.06.2021



DHL Express will welcome 8 100% electric vans in Luxembourg in September. The ambition is to deliver the capital only with electric vehicles. (Photo: Shutterstock)

